

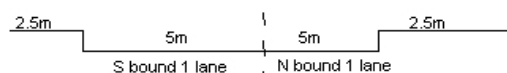
YEAR 2018

COVERAGE (B) STATION 4401

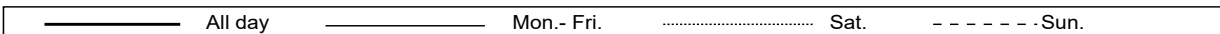
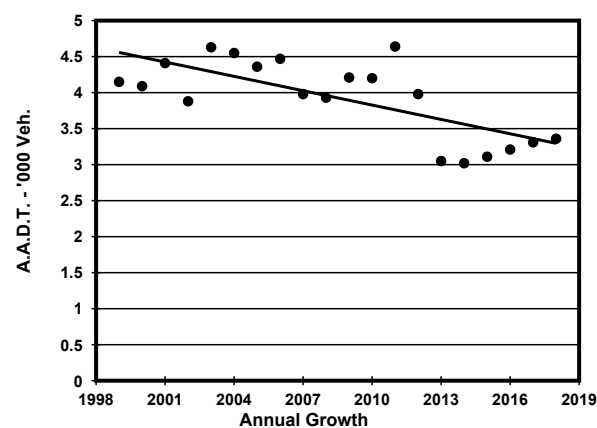
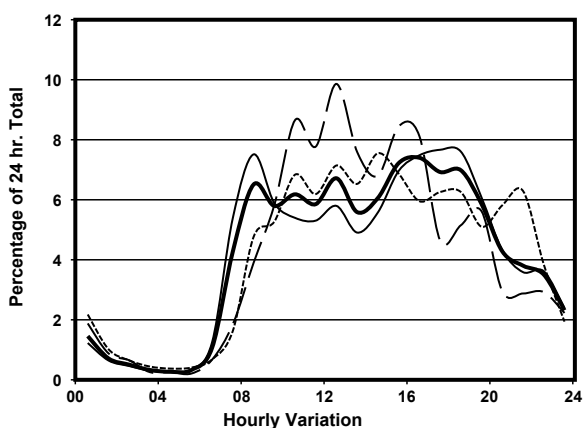
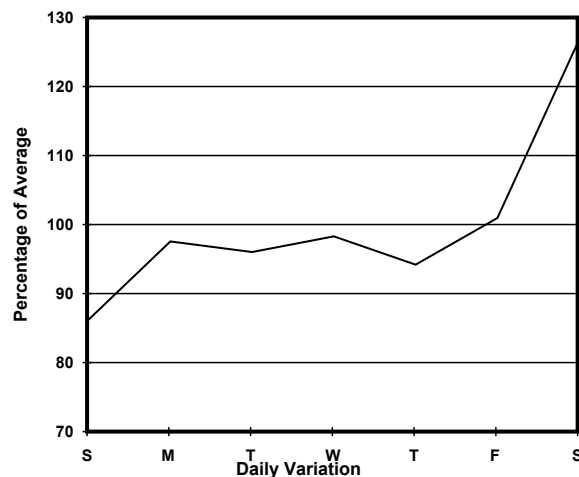
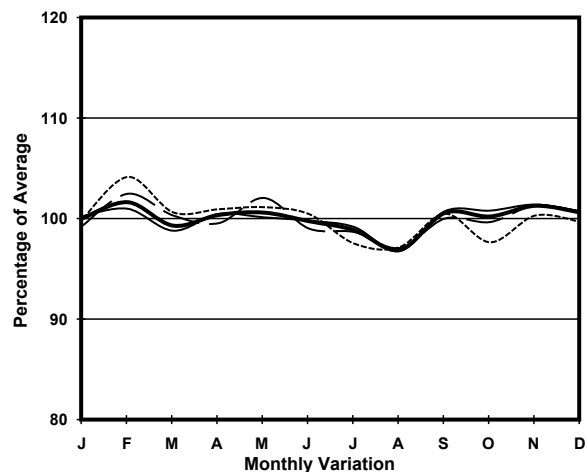
ROAD NETWORK MINOR

ROAD TYPE LOCAL DISTRIBUTOR

LINK HO MAN TIN ST (from WATERLOO RD to HO MAN TIN HILL RD)



1. TRAFFIC FLOW VARIATION AND GROWTH



2. TRAFFIC CHARACTERISTICS (BY DIRECTION)

Parameter	All - Day	Mon. - Fri.	Sat.	Sun.
SOUTH BOUND				
A.A.D.T.	1410	1360	1780	1370
R 12 / 24 - %	73.6	73.5	75.8	70.5
R 16 / 24 - %	93.1	93.2	91.9	93.4
AM Peak Hour	0800-0900	0800-0900	0900-1000	0900-1000
One-way flow at AM peak hour	80	90	110	90
T - % (AM)	-	4.2	-	-
PM Peak Hour	1600-1700	1800-1900	1600-1700	1700-1800
One-way flow at PM peak hour	120	120	160	90
T - % (PM)	-	-	-	-
Prop.of commercial vehicles - 16 hr.	-	2.5	-	-
NORTH BOUND				
A.A.D.T.	1950	1940	2520	1560
R 12 / 24 - %	76.9	76.9	80.6	72
R 16 / 24 - %	92.9	93.1	93.7	91.4
AM Peak Hour	0800-0900	0800-0900	0900-1000	0900-1000
One-way flow at AM peak hour	140	160	140	70
T - % (AM)	-	2.8	-	-
PM Peak Hour	1600-1700	1700-1800	1600-1700	1800-1900
One-way flow at PM peak hour	130	140	190	100
T - % (PM)	-	9.1	-	-
Prop.of commercial vehicles - 16 hr.	-	1.3	-	-

3. OTHER INFORMATION AND COMMENT

4. Vehicle classification and occupancy - Monday to Friday

Time		Class of vehicle									
		Motor Cycle	Private Car	Taxi	Private LB	PLB	Goods veh.		Non Fr. Bus	Fr. Bus	
							Light	M & H		SD	DD
0700-0800	Pro	0.0	42.9	17.9	17.9	3.6	7.1	0.0	10.7	0.0	0.0
	Ocp	0.0	1.4	2.0	8.6	12.0	1.5	0.0	13.3	0.0	0.0
0800-0900	Pro	0.0	88.1	3.6	3.6	0.0	1.2	0.0	3.6	0.0	0.0
	Ocp	0.0	1.6	2.3	4.0	0.0	1.0	0.0	7.7	0.0	0.0
0900-1000	Pro	4.9	78.0	2.4	0.0	2.4	12.2	0.0	0.0	0.0	0.0
	Ocp	1.0	1.6	2.0	0.0	7.0	1.8	0.0	0.0	0.0	0.0
1000-1100	Pro	0.0	51.6	22.6	0.0	3.2	19.4	3.2	0.0	0.0	0.0
	Ocp	0.0	1.4	1.1	0.0	5.0	1.8	2.0	0.0	0.0	0.0
1100-1200	Pro	2.9	67.6	11.8	0.0	2.9	14.7	0.0	0.0	0.0	0.0
	Ocp	1.0	1.2	1.5	0.0	10.0	1.4	0.0	0.0	0.0	0.0
1200-1300	Pro	2.3	52.3	13.6	6.8	4.5	11.4	0.0	9.1	0.0	0.0
	Ocp	1.0	1.7	1.3	3.7	6.5	1.8	0.0	8.8	0.0	0.0
1300-1400	Pro	2.1	53.2	31.9	0.0	2.1	10.6	0.0	0.0	0.0	0.0
	Ocp	1.0	1.4	1.6	0.0	14.0	1.2	0.0	0.0	0.0	0.0
1400-1500	Pro	2.1	47.9	31.3	0.0	2.1	14.6	2.1	0.0	0.0	0.0
	Ocp	1.0	1.4	1.5	0.0	6.0	2.3	1.0	0.0	0.0	0.0
1500-1600	Pro	0.0	46.7	35.6	4.4	0.0	11.1	0.0	2.2	0.0	0.0
	Ocp	0.0	1.5	1.8	7.0	0.0	1.2	0.0	1.0	0.0	0.0
1600-1700	Pro	1.4	70.4	11.3	2.8	0.0	14.1	0.0	0.0	0.0	0.0
	Ocp	1.0	1.6	2.0	3.5	0.0	1.2	0.0	0.0	0.0	0.0
1700-1800 Peak hour	Pro	3.8	56.6	26.4	1.9	1.9	5.7	1.9	1.9	0.0	0.0
	Ocp	1.0	1.7	1.9	1.0	8.0	1.0	3.0	12.0	0.0	0.0
1800-1900	Pro	1.4	76.1	19.7	0.0	1.4	1.4	0.0	0.0	0.0	0.0
	Ocp	1.0	1.5	2.1	0.0	9.0	2.0	0.0	0.0	0.0	0.0
1900-2000	Pro	1.4	74.6	22.5	0.0	1.4	0.0	0.0	0.0	0.0	0.0
	Ocp	1.0	1.6	1.6	0.0	9.0	0.0	0.0	0.0	0.0	0.0
2000-2100	Pro	2.5	45.0	45.0	0.0	5.0	0.0	2.5	0.0	0.0	0.0
	Ocp	1.0	1.4	1.5	0.0	10.0	0.0	3.0	0.0	0.0	0.0
2100-2200	Pro	0.0	59.0	30.8	2.6	2.6	5.1	0.0	0.0	0.0	0.0
	Ocp	0.0	1.7	1.5	1.0	5.0	1.5	0.0	0.0	0.0	0.0
2200-2300	Pro	3.4	44.8	48.3	0.0	3.4	0.0	0.0	0.0	0.0	0.0
	Ocp	1.0	1.2	1.6	0.0	10.0	0.0	0.0	0.0	0.0	0.0
16 hours	Pro	1.7	63.1	21.7	2.2	1.9	7.3	0.5	1.5	0.0	0.0
	Ocp	1.0	1.5	1.7	5.2	8.5	1.5	2.3	9.3	0.0	0.0

Legend

Pro. Proportion of vehicles in % (Sum may not add up to 100% due to figure rounding)*

Ocp. Average occupancy of vehicles including both driver and passengers*

M&H Medium and Heavy

***** All traffic data are collected from combined bounds except for one way traffic